

COSEC Feature Update

Feature:

Attendance on Move

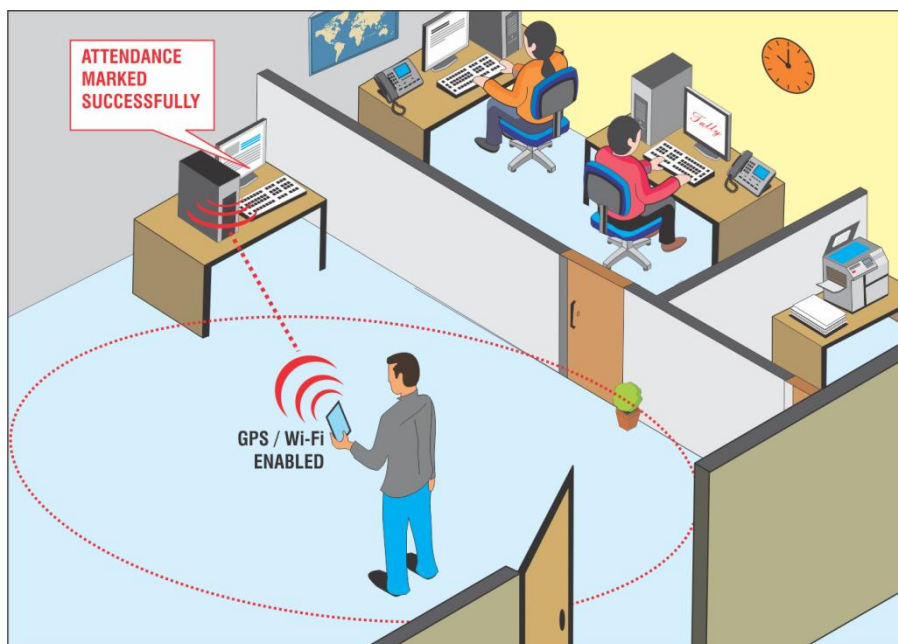
About the feature:

Attendance on Move, through COSEC APTA, facilitates automatic attendance marking of the user upon entering/exiting a pre-defined location stored in location master of the system, using GPS/Wi-Fi signals.

Feature Description:

COSEC APTA automatically marks the attendance of a user when he or she reaches the location already stored in the location master. Upon entering/exiting the premises, a user will be required to start the COSEC APTA application on his/her mobile device in order to have the attendance marked automatically.

The application marks the attendance when the location coordinates of a user's mobile device matches with the location stored in Location Master on the COSEC Web. Even the attendance will be marked when a user enters/exits the Wi-Fi Zone of the premises. The user will also be notified once his/her attendance is marked.



Prerequisites for using the Feature:

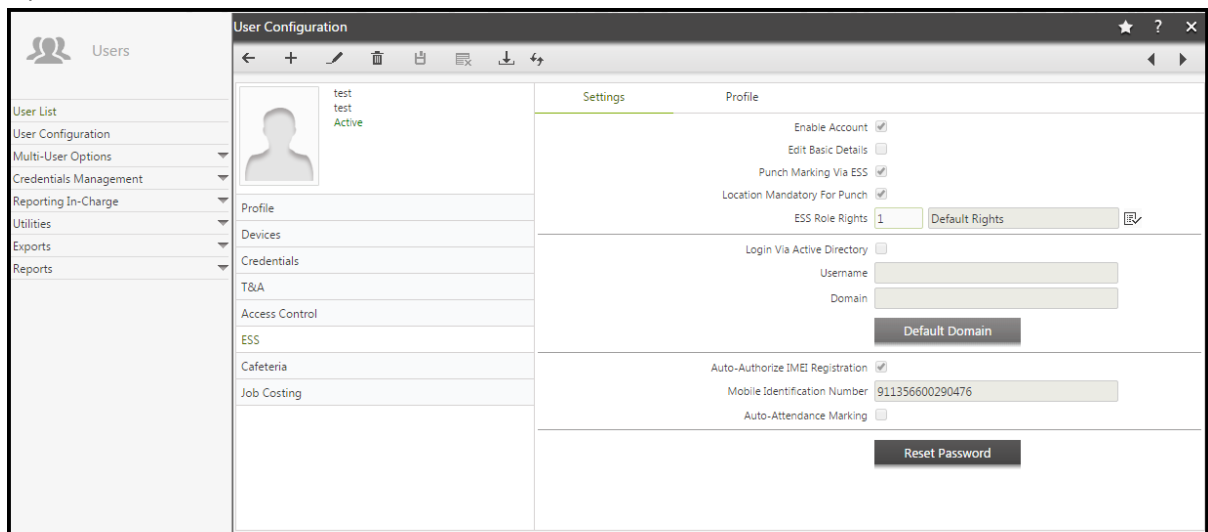
- COSEC TAM license must be configured with CENTRA PLATFORM
- COSEC ESS license must be configured with CENTRA PLATFORM
- User ID must be created in the ESS with IMEI registration
- COSEC APTA application must be installed in the user's smart phone

Benefits of the Feature

- Prevents long employee queues for attendance marking
- Improves employees' productivity
- 100% successful user authentication
- Reduces attendance correction application to HR

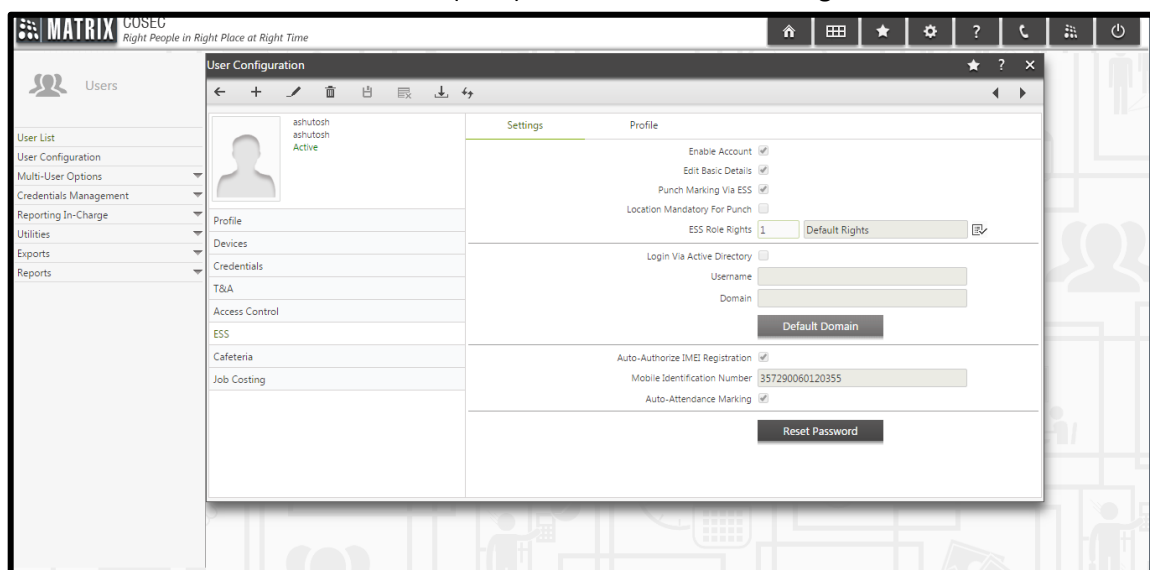
Steps to allow the ESS user to facilitate this feature:

1. Open **Users** from COSEC web and create a new user

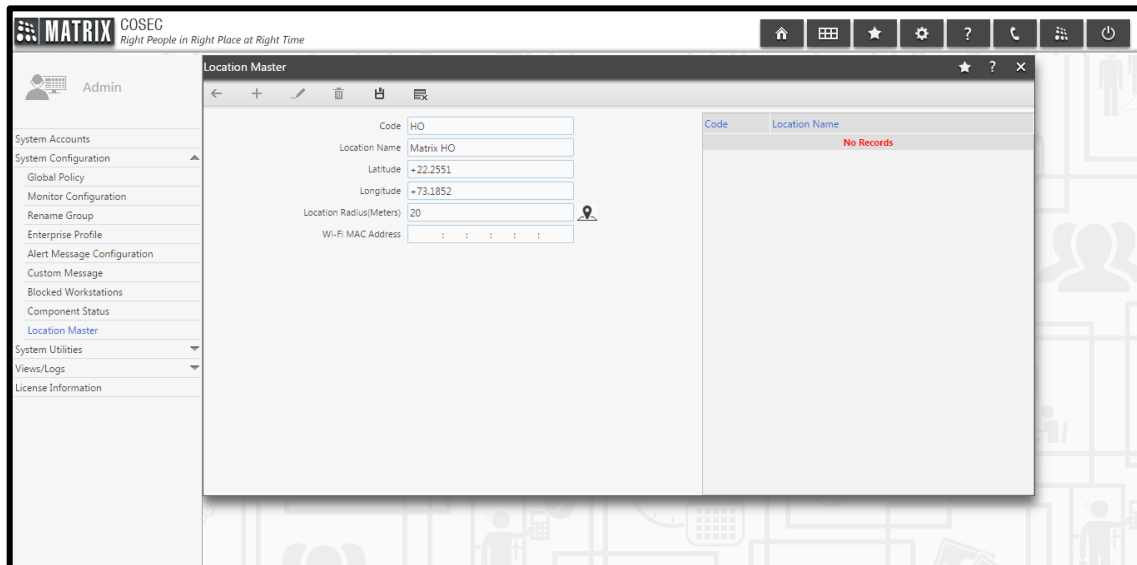


2. Go to **ESS** → **Settings** → Mark in **Enable Account**, **Punch Marking via ESS**, and **Location Mandatory for Punch** options.

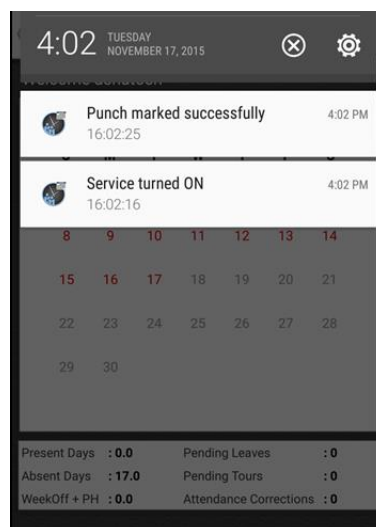
3. Mark **Auto Attendance Marking** and Select **Auto Authorize IMEI Registration** option, and Type in the Mobile Identification number (IMEI) of the device to be configured with ESS.



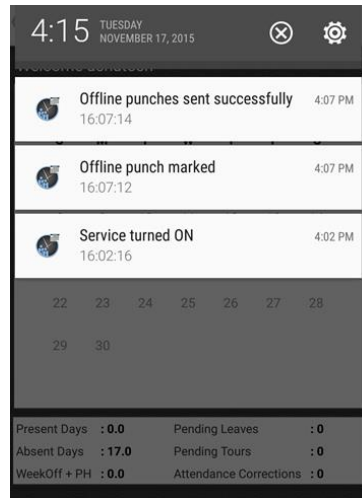
- Go to **Admin** → **System Configuration** → **Location Master** → Specify the location details of a particular location to be used for attendance marking, along with the location radius. Clicking on the pin icon, a Google Map of the selected location can be viewed. Save the configurations once done.



- As soon as the user reaches the workplace and starts COSEC APTA on the mobile, his or her attendance will automatically be submitted (location service in mobile should be turned ON)



- If the user leaves the location, COSEC APTA will mark it as an offline punch. Next time as soon as the device connects to the internet, offline punches will be sent to the server.



Application:

COSEC Attendance on Move feature is useful for organisations having

- Large number of field employees
- Employees with week biometric impression
- Frequent issues of attendance corrections, because of missed punches
- Large number of employees sharing the same shift timings

Target User Profile:

- Construction Sites
- Manufacturing Units
- BFSI
- IT/Call Centres
- Enterprises having large number of employees

Date	17/11/2015
Release	COSEC APTA V2R1
Feature Name	Attendance on Move
Software Version	COSEC V9R2

ABOUT MATRIX

Established in 1991, Matrix is a leader in Telecom and Security solutions for modern businesses and enterprises. An innovative, technology driven and customer focused organization; Matrix is committed to keep pace with the revolutions in the telecom and security industries. With around 30% of its human resources dedicated to the development of new products, Matrix has launched cutting-edge products like IP-PBX, Universal Gateways, VoIP Gateways and Terminals, GSM Gateways, Access Control and Time-Attendance Systems, Video Surveillance System and Fire Alarm Systems. These solutions are feature-rich, reliable and conform to the international standards. Having global foot-prints in Asia, Europe, North America, South America and Africa through an extensive network of more than 500 channel partners, Matrix ensures that the products serve the needs of its customers faster and longer. Matrix has gained trust and admiration of customers representing the entire spectrum of industries. Matrix has won many international awards for its innovative products.



For further information, please contact:



MATRIX COMSEC

Head Office

394-GIDC, Makarpura, Vadodara-390 010, India.

Ph: +91 265 2630555, Fax: +91 265 2636598

E-mail: Inquiry@MatrixComSec.com

SMS 'MATRIX' to +91 99987 55555

Factory

19-GIDC, Waghodia, Dist. Vadodara-391 760, India.

Ph: +91 2668 263172/73

www.MatrixSecuSol.com

Due to continuous technology upgradations, product specifications are subject to change without notice.