

## MATRIX SATATYA

### Video Surveillance Solution for Enterprises

Video surveillance is an important part of any organization's security strategy. Security and safety of human resources, physical and intellectual assets are of utmost importance. In addition, productivity and discipline aspects are also linked with video surveillance. However, the video surveillance solutions available in the market today offer reactive security. Moreover, these solutions stop at mere monitoring and recording, lacking the intelligent features that offer centralized control over the solution. Furthermore, with the advent of IP solutions, bandwidth and storage requirements have dramatically increased leading to higher cost of overall solution preventing organizations to shift to the superior IP solution.

Matrix presents SATATYA – a family of Video Surveillance solutions specifically engineered for large organizations to address their enterprise grade applications. The offering in terms of solution includes an enterprise VMS, NVRs and IP camera. Considering the need of today's globalized organizations, the entire Matrix solution focuses on four major aspects, which are preventive security, centralized control with ease of management, storage space optimization and efficient bandwidth utilization.



## MATRIX SATATYA: SOLUTIONS OFFERED

| VIDEO MANAGEMENT SOFTWARE                                 | NETWORK VIDEO RECORDER   | IP CAMERAS   |
|---|--|--|
| Intelligent Video Analytics                               | 64 Channel NVR<br><ul style="list-style-type: none"> <li>• SATATYA NVR64P</li> <li>• SATATYA NVR64S</li> </ul> | IP PTZ Camera  |
| Cognitive Monitoring Analysis and Response Engine (CMARE) |  |  |
| Vehicle Parking Management                                | 24 Channel NVR<br><ul style="list-style-type: none"> <li>• SATATYA NVR24P</li> </ul>                           | 3MP Cameras<br><ul style="list-style-type: none"> <li>• 3MP Motorized Varifocal</li> <li>• 3MP Manual Varifocal</li> <li>• 3MP Fixed Lens</li> </ul> |
| Command and Control Center                                | 16 Channel NVR<br><ul style="list-style-type: none"> <li>• SATATYA NVR16H</li> <li>• SATATYA NVR16S</li> </ul> |  |
| People Management Solutions                               |  |  |
| Mobile Application for VMS                                | 8 Channel NVR<br><ul style="list-style-type: none"> <li>• SATATYA NVR8S</li> </ul>                             | 2MP Cameras<br><ul style="list-style-type: none"> <li>• 2MP Motorized Varifocal</li> <li>• 2MP Manual Varifocal</li> <li>• 2MP Fixed Lens</li> </ul> |

## CENTRALIZED V/S LOCAL VIDEO SURVEILLANCE

| FUNCTIONS                           | LOCALIZED VIDEO SURVEILLANCE   | CENTRALIZED VIDEO SURVEILLANCE (MATRIX SATATYA SAMAS)  |
|-------------------------------------|--|--|
| Capturing                           | Difficult and costly to deploy, configure, monitor, upgrade and troubleshoot IP cameras at dispersed and remote locations.   | Use Plug-n-Play, Auto Search, Status Monitoring and Remote Upgrade to install, monitor, upgrade and troubleshoot all cameras from a central location.  |
| Monitoring                          | Monitoring at multiple locations require multiple people, equipment and space. Dispersed monitoring also restricts analytics, processing and integration possibilities.  | Single dashboard for consolidated live view of video and events from multiple locations spread across the planet breaking distance and time barriers.  |
| Storage Management                  | Localized recording with data scattered over multiple locations. Video with very little security, encryption and compression.  | Centralized video surveillance offers flexibility of distributed, centralized as well as cloud based storage. It also provides higher security of data, scheduled backup with audio and video compression, latest encryption and higher RAID support to NAS.                         |
| Playback and Investigation          | Difficulties and delays in investigation, conclusions and response. Requires transporting either video files or people.  | Instant playback and investigation from the central location of all video files. Smart Investigation with Intelligent Video Analytics (IVA) designed to find specific events from the recorded videos instantly. Improves investigation accuracy and reduces response time and cost. |
| Intelligent Video Analytics (IVA)   | Local video surveillance systems just dump the captured data making it difficult to monitor and take required actions.   | Centralized solutions take data from disparate locations and perform analytics like Missing Object, Intrusion Detection, Vehicle Counting, Face Detection etc. for anomaly detection and video indexing.   |
| Real-time Notifications             | Limited notifications restrict ability to correlate and respond. Disconnected analytics and investigation confine such solutions to reactive security.   | Centralized dashboard with real-time notifications for undesired events and exceptions help prevent accidents and security lapses.   |
| Integration                         | Hardware integration only between local devices only for triggering local alarms. Software, API and database integrations not possible.  | Seamless integration with diverse systems such as access control, fire-alarm, building management and IoT at physical, API and database layers to enhance effectiveness of all the systems.  |
| Centralized System Management       | Separate IT-NW-electrical teams to manage servers, devices, cameras, networks, power, etc. Each local system is designed for single user running on a single PC server. Real-time health status of all these scattered systems is not available. | Small central team can manage the entire video surveillance infrastructure. Real-time working status of entire video surveillance is system available on the central dashboard.  |
| Organization Structure              | Difficulty in mapping and aligning video surveillance rights and responsibilities with organization structure, hierarchy and physical layouts of campuses, buildings, plants and offices.  | Users profiles exactly matching their titles, roles, responsibilities and rights. Hierarchical video surveillance system matching with organization's physical layout.   |
| Interoperability and Open Standards | Most small (local) solutions are "closed" and lack open standards and compatibility to work with cameras and devices from multiple vendors.  | Built on open ONVIF and other networking standards. Open platform having built-in compatibility with popular IP camera brands. Well documented API integration with other third party solutions.   |
| Real life Business Applications     | Largely an isolated appliance limited to capturing, monitoring, recording and occasional playback. Limited video analytics/interpretation lacking capabilities to address real life business applications.                                       | Intelligent and integrated video surveillance system capable of interpreting video streams and thus offering solution for real life business problems such as integration with weighbridge, POS, etc.  |

# SATATYA SAMAS – ENTERPRISE VIDEO MANAGEMENT SOFTWARE

**MORE LOCATIONS | MORE CONTROL | MORE VISIBILITY**

**REDUCE OPERATING COST**

- No Public IP Required
- Camera-wise Recording Retention
- Adaptive Recording and Streaming
- No Server Required for Regional Monitoring

**CENTRALIZED CONTROL**

- Distributed Architecture
- Edge Recording
- User based Roles and Rights
- Integrated Solution

**CENTRALIZED VISIBILITY**

- 100,000 Cameras
- 1,000 Simultaneous Users
- E-Map Monitoring
- Daily Highlights

**INSTANT NOTIFICATION**

- SMS
- Email with Snapshot
- Video Pop-up
- Audio Alarm

**DATA SECURITY**

- Redundancy
- SSL Transfer
- Health Status Reports
- TCP Notification within 5Kbps

**SMART IDENTIFICATION**

- Perimeter Security
- Asset Security
- Human Security
- Vehicle Security

## CENTRALIZED CONTROL AND MONITORING



### **E-map Monitoring**

Monitor Cameras and Sensors Placed on the Organizational Layout with Notification



### **Sequencing and Camera Grouping**

Logical Grouping and Sequencing of Cameras – Branch-wise and Domain-wise



### **Daily Highlights**

Camera-wise Motion based Daily Summary for Quick Analysis



### **User Defined Roles and Rights**

Camera and Function based User Login Roles and Rights

## PREVENTIVE SECURITY AND SAFETY



### **Motion Detection**

Notification on Occurrence of Motion in Defined Areas



### **License Plate Recognition**

Detect and Recognize the License Plate Number and Save it to Database



### **No Motion Detection**

Notifications on No Motion for a Defined Time in a Defined Area



### **Trip Wire**

Notifications on Object/Person Crossing a Line in a Defined Direction



### **Intrusion Detection**

Notifications on Intrusion of any Object/Person in a Defined Area



### **People Counting**

Direction based Counting of Heads Passing through a Defined Area



### **Face Detection**

Notifications on Detection of Faces in a Defined Area



### **Loitering**

Notifications on any Movement in a Defined Area for a Defined Period



### **Missing Object Detection**

Notifications on Detection of Object Moving out of a Marked Area



### **Vehicle Counting**

Count Number of Vehicles Passing in or out from a Defined Area



### **Tail-gating**

Notification on Multiple Entries from a Defined Entry/Exit in a Defined Time



### **Unauthorized Parking**

Notification on Parking on a Spot in a Wrong Slot



### **Prohibited Parking**

Notification on Parking in No Parking Zone



### **Improper Parking**

Notification on Parking Outside Defined Slots



### **Wrong Way**

Notification on Vehicles Moving against Defined Direction



### **Premise Availability**

Real-time Status of the Number of Empty Parking Slots in the Premises



### **Audio Exception**

Notification on Abnormally Loud Audio

## REAL-TIME NOTIFICATIONS



### Email with Snapshot

Email Notification with a Snapshot/Video Recording for Pictorial Evidence



### Video Pop-up

Event based Video Pop-up with Multiple Window Stacking



### SMS

Camera-wise Event based SMS Notification



### Audio Alarm & Buzzer

Event based Audio, Alarm and Buzzer to Alert Security Personnel

## RELIABILITY



### Evidence Lock

Restrict Deletion of Important Evidence by Defining a Locking Period



### Redundancy

No Loss of Recording in Case of any Failure of Recording Server



### Clip Export

Instantly Export Proof by Sending Event based Clips to Central Location



### Health Status Reports

Ensure Functions like Live View, Recording and Connectivity for Entities like Cameras, Server and Sensors are Operating Smoothly

## LOW COST OF SOLUTION - BANDWIDTH, STORAGE, SERVER



### Edge Recording

Flexibility of Videos/Snapshot Storage as per the Availability of Bandwidth and Priority of Event



### Internet Dongles with Private IP

Connects all Video Recorders/Cameras Centrally without a Public IP as Device Initiates Connection to a Central Location



### Multi-streaming

4 Stream Support for: Live View, Recording, Remote View, Mobile Monitoring



### Two Level Data Compression & Archiving

Deletes Audio files during First Level of Compression and Removes P Frames for further Compression after a Defined Period of Time



### Adaptive Recording

Records at Lower Frame Rate during No Activity Period



### Camera-wise Recording Retention

Define Camera-wise Storage Days to Retain the Recording based on Importance of Camera



### NAS and FTP

Supports NAS/FTP for Storage and Backup of Videos/Snapshots

## INTEGRATED SECURITY SOLUTION



### Integration

Information such as Snapshot, Recorded Clip, Event Notification and Bookmark can be Stamped for any Third Party Event



### Interoperability

Cameras Support ONVIF 2.0 Version along with other Major Brands

## MOBILE APPLICATION FOR VIDEO RECORDERS: SATATYA VISION

### Overview

Matrix SATATYA VISION is a comprehensive Video Surveillance application for mobile devices. It is designed for smart phones and tablets running on popular operating systems such as Android and iOS. It connects multiple recording servers, cameras and video recorders and allows viewing all the locations and cameras from a single window with sequencing.

### Features



**Configure Public and Private IP**



**Group Cameras from Different Servers and Video Recorders**



**Define Favorite Template**



**Playback**



**Bandwidth Optimization**



**PTZ Control**



**Pictorial Evidence**



**Audio**



## SATATYA SAMAS SCALABILITY

|                              |          |
|------------------------------|----------|
| Number of Cameras            | 1,00,000 |
| Number of Devices            | 10,000   |
| Number of Recording Server   | 1,000    |
| Number of Simultaneous Users | 1,000    |

| LICENSING OF SATATYA SAMAS                         | SATATYA SAMAS PLATFORM |       |          |
|--|------------------------|-------|----------|
|  | GE                     | ME    | LE       |
| In-built Cameras                                   | 20                     | 50    | 200      |
| Maximum Camera Supported                           | 100                    | 250   | 1,00,000 |
| In-built Simultaneous Users                        | 2                      | 5     | 5        |
| Maximum Simultaneous Users Supported               | 1,000                  | 1,000 | 1,000    |
| Maximum Number of Cameras per Server               | 255                    | 255   | 255      |
| <b>No License is Required for Recording Server</b> |                        |       |          |

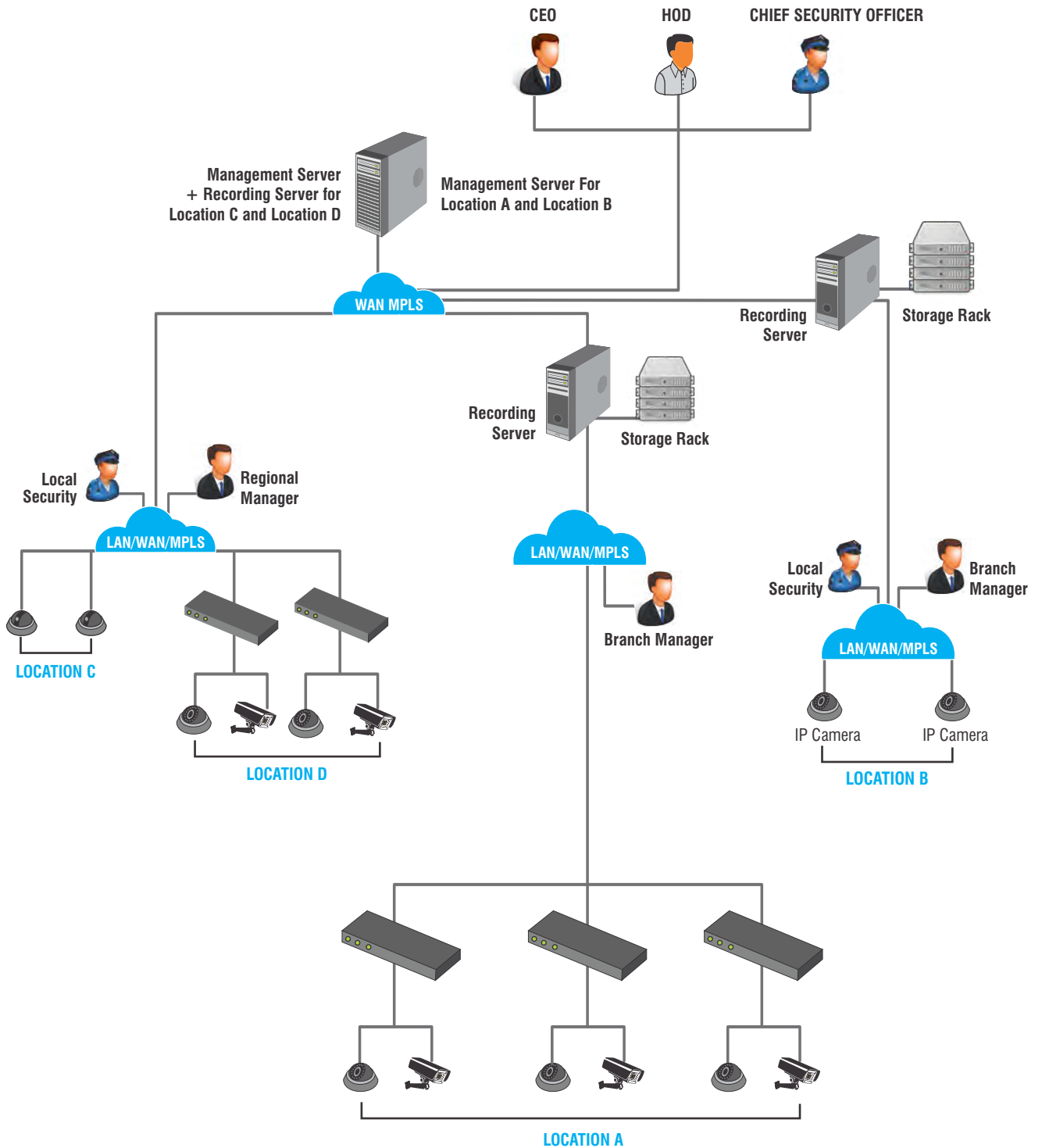
## SATATYA SAMAS LICENSING MODULES

|  |   |
|--|---|
| BASIC PLATFORM                         | VEHICLE TRACKING & PARKING MANAGEMENT             |
| ENTERPRISE INTELLIGENT VIDEO ANALYTICS | COGNITIVE MONITORING ANALYSIS AND RESPONSE ENGINE |
| AUTOMATIC NUMBER PLATE RECOGNITION     | PEOPLE MOVEMENT AND TRACKING                      |
| FACE RECOGNITION                       | ADDITIONAL CAMERA LICENSE                         |
| ADDITIONAL USER LICENSE                | ADDITIONAL UPGRADATION LICENSE                    |

## SATATYA SAMAS SERVER AND CLIENT MODULES

|                                 |   |
|---------------------------------|---|
| SATATYA SAMAS Management Server | Management Server is for administration of all connected entities such as Recording Servers, Devices, Cameras, Access Control Devices, Sensors and Alarms.  |
| SATATYA SAMAS Recording Server  | Recording Server is used for recording a camera stream on a server administrated under the Management Server.   |
| SATATYA SAMAS Admin Client      | Admin Client is for system administrators to configure and manage entire SATATYA SAMAS. Multiple admin clients with different login rights are supported for managing various aspects including Servers, Devices, Live View, Recording, Streaming, Storage, Backup, Archival, Alerts and Notifications. |
| SATATYA SAMAS Smart Client      | Smart Client is for users which allow them to manage all video surveillance activities including Live View, Playback, Investigation, Video Analytics, Alarms and Integration. Multiple users can log in simultaneously with different login roles and rights.   |
| SATATYA SAMAS Media Client      | Media Client is for users to view backup videos stored in the backup drive.   |
| SATATYA SAMAS Mobile Client     | SATATYA VISION is the Android and iOS mobile application for SATATYA SAMAS which is used for remote monitoring.   |

# MATRIX SATATYA SAMAS ARCHITECTURE



## DEPLOYMENTS

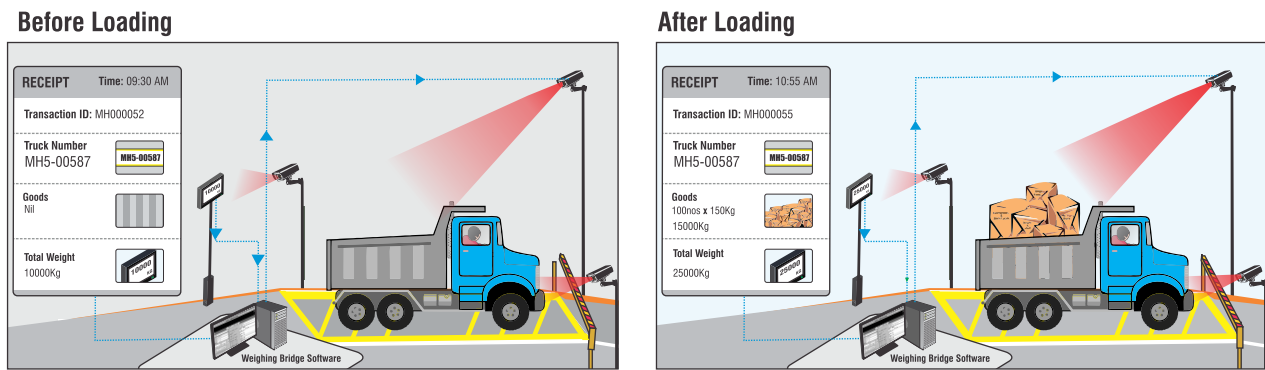
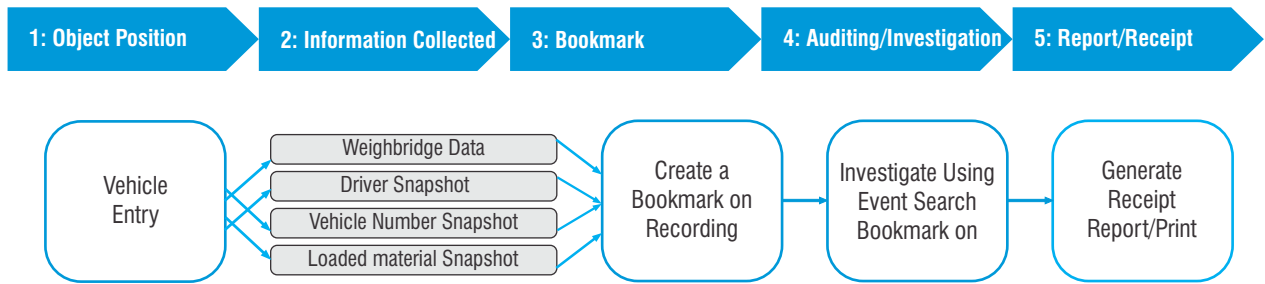
|                     |                   |   |                  |   |           |   |        |
|---------------------|-------------------|---|------------------|---|-----------|---|--------|
| <b>DEPLOYMENT A</b> | Management Server | → | Recording Server | → | Devices   | → | Camera |
| <b>DEPLOYMENT B</b> | Management Server | → | Recording Server | → | IP Camera |   |        |
| <b>DEPLOYMENT C</b> | Management Server | + | Recording Server | → | IP Camera |   |        |
| <b>DEPLOYMENT D</b> | Management Server | + | Recording Server | → | Devices   | → | Camera |

**Note:** Deployment C and Deployment D have a common recording server for regional management.

## WEIGH BRIDGE (USING WEB API)

SATATYA SAMAS provides users with the flexibility to collect pictorial evidence of inward or outward material. Mapping of unique number such as License Plate/Challan Number/ Token number with each vehicle is also possible for carrying out

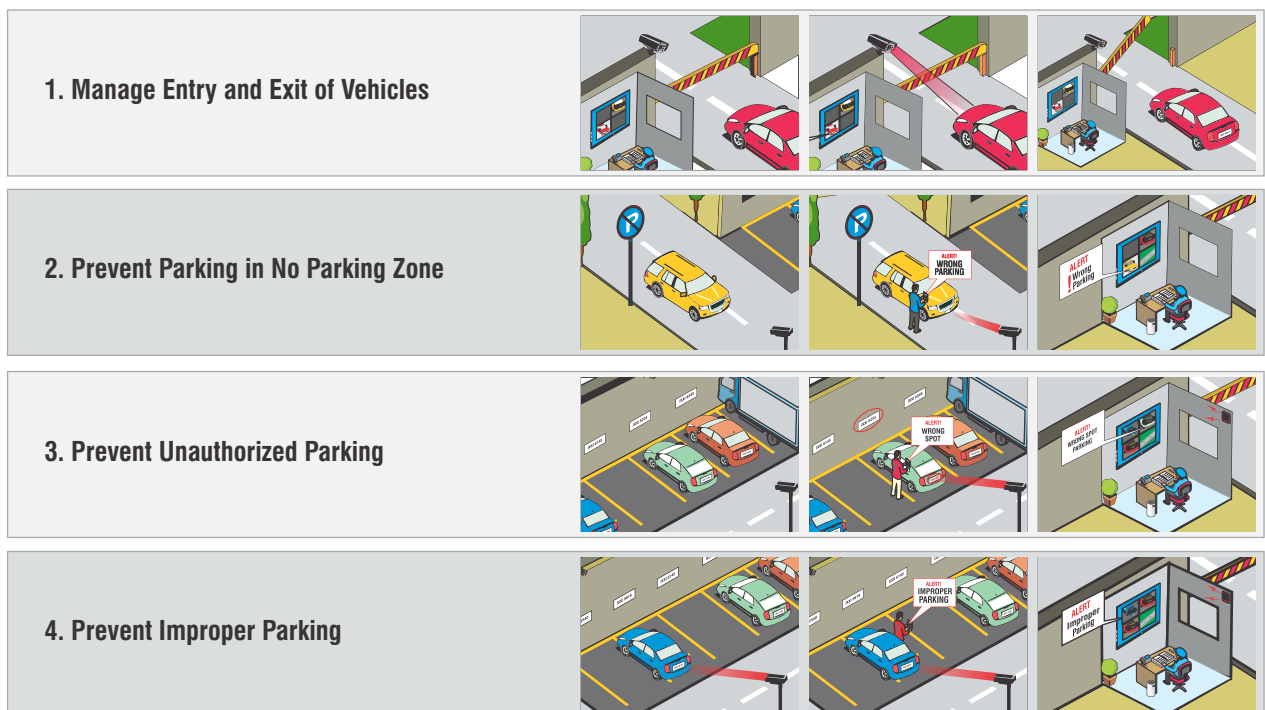
further verification and auditing. Vehicle search can be carried out using any of the unique "Bookmarks" mentioned above for quick validation, using snap shots from various angles of payload, vehicle, driver, weighing scale, etc.



## PARKING MANAGEMENT

Matrix SATATYA SAMAS brings you the perfect solution to put an end to all your parking woes. It is a comprehensive solution for your premises that will prevent people from parking haphazardly,

parking in restricted areas, parking in others' slots, moving in a wrong direction and also give real-time status of vacant parking spaces.





# SATATYA VIDEO RECORDERS



Matrix Video Surveillance consists of a wide portfolio of hardware and software products. Network Video Recorder (NVR), Software for Centralized Monitoring and Mobile Application are a part of this portfolio. Our products are designed considering the challenges experienced in the video surveillance market like high bandwidth, storage, difficulty in management of multiple cameras and integration. Below is the list of our salient features:

## MANAGEMENT AND MONITORING



### Cascading

Enables Monitoring of up to 19 other Devices with a Single Device without using a Server



### Playback and Search

Provides Synchronous Playback to Enable Timeline and Event based Search



### E-map Monitoring

Monitor Cameras and Sensors Placed on the Organizational Layout with Notification



### Two Way Audio

Allows Listening to Audio from the Camera's End as well as Enables Speaking to the Camera

## PREVENTIVE SECURITY



### Calling from Mobile App

Provides Flexibility to Call a SIM Number or an Extension (MATRIX EPABX) Assigned to any Camera Directly from the Mobile Device



### Instant Notifications

Provides SMS Notification, Email Notification with Snapshot, Video Pop-up, Audio Alarm and Buzzer Notifications

## BANDWIDTH OPTIMIZATION



### Multi-streaming with CBR and VBR

Provides Flexibility to Customize the Streams as per Requirement and Availability of Bandwidth



### TCP based Notifications

System Sends Push Notifications about Functioning Status of all Cameras and Devices within 5Kbps

## REDUCED STORAGE COSTS



### Adaptive Recording

Records at Lower Frame Rate during No Activity Period



### Scheduled and Manual Backup over NAS/FTP

Supports up to 2 NAS with 16TB each and RAID Functionality



### Higher In-built Storage

Provides Higher Storage on Local Drive with 6TB HDD per Slot



### Camera-wise Recording Retention

Provides Camera-wise Flexibility to Configure the Number of Days for Retaining Recording based on Priority of Camera



### H.265 Compression

Consumes 50% less Storage compare to H.264

## INTEGRATED SECURITY



### Integration

Allows Database Level Integration with Matrix Access Control



### Interoperability

Supports Connection of all ONVIF, RTP or RTSP Compliant Cameras with Matrix Video Recorders

## IP SOLUTION: NETWORK VIDEO RECORDERS

**Matrix SATATYA NVR64P** is a 64 channel premium Network Video Recorder suitable for enterprises, built on a Core i3 processor for smooth and reliable performance. Throughput: 354Mbps and Storage capacity: 24TB

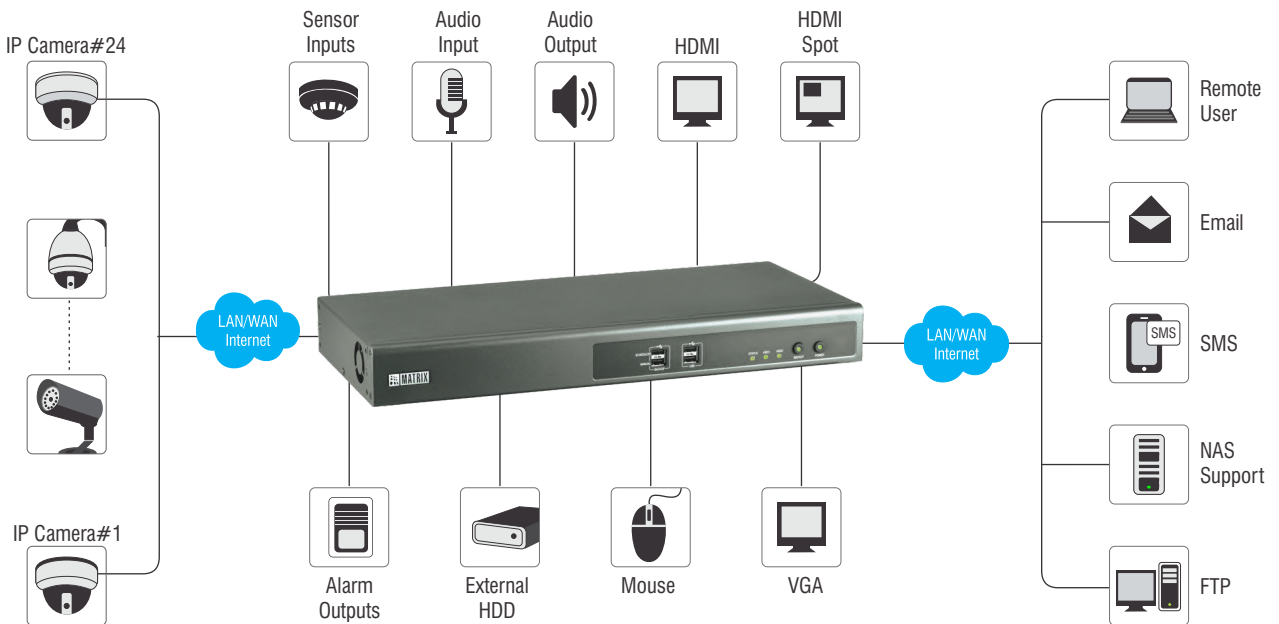
**Matrix SATATYA NVR64S** is a 64 channel standard Network Video Recorder suitable for enterprises, built on a Core2 Duo processor for smooth and reliable performance. Throughput: 256Mbps and Storage capacity: 24TB

**Matrix SATATYA NVR16H** is a 16 channel High end Network Video Recorder, which is expandable up to 24 Channels, designed to provide enterprise grade performance and reliability. Throughput: 144Mbps and Storage capacity: 24TB

**Matrix SATATYA NVR24P** is a 24 channel Premium Network Video Recorder, designed for performance and reliability that organizations expect from a professional Video Surveillance solution. Throughput: 144Mbps and Storage capacity: 12TB

**Matrix SATATYA NVR16S** is a 16 channel standard Network Video Recorder, which is expandable up to 24 Channels, designed for performance and reliability that organizations expect from a professional Video Surveillance solution. Throughput: 144Mbps and Storage capacity: 6TB

**Matrix SATATYA NVR8S** is an 8 channel Network Video Recorder designed for SOHO and SME organizations. Throughput: 48Mbps and Storage capacity: 6TB



|            |                               | SATATYA NVR8S | SATATYA NVR16S | SATATYA NVR24P | SATATYA NVR16H | SATATYA NVR64P | SATATYA NVR64S |
|------------|-------------------------------|---------------|----------------|----------------|----------------|----------------|----------------|
| Video      | IP Channels                   | 8             | 24             | 24             | 24             | 64             | 64             |
|            | VGA Main                      | 1             | 1              | 1              | 1              | 1              | 1              |
|            | HDMI Main                     | 1             | 1              | 1              | 1              | 1              | 1              |
|            | HDMI Spot                     | X             | X              | 1              | 1              | X              | X              |
| Audio      | Input                         | X             | X              | 1              | X              | 1              | 1              |
|            | Output                        | X             | X              | 1              | X              | 1              | 1              |
| Alarm      | Input                         | X             | 4              | 8              | 8              | 4              | 4              |
|            | Output                        | X             | 1              | 4              | 3              | 2              | 2              |
| Storage    | SATA Ports (6TB Per Port)     | 1             | 1              | 2              | 4              | 4              | 4              |
| Interfaces | 10/100Mbps Adaptive Interface | 1             | X              | X              | X              | X              | X              |
|            | Gigabit Ethernet Interfaces   | X             | 2              | 2              | 2              | 2              | 2              |
|            | USB Ports                     | 2             | 2              | 4              | 4              | 4              | 4              |

## MATRIX SATATYA VIDEO SURVEILLANCE SOFTWARE FOR RECORDERS

Remote viewing and monitoring of an organization is of very high importance for any owner. The SATATYA Video Surveillance software for recorders helps in monitoring the NVRs even when the owner is not on the premises. This helps in increasing productivity, efficiency and discipline of the organization.

### Key Features

- View and Configure a SATATYA NVR
- Addition of Multiple NVRs
- Synchronous/Asynchronous Playback
- Playback from Event Log
- Health Status of Connected Device
- Camera-wise Recording Retention
- Camera-wise Constant and Variable Bit Rate
- SMS and Email Notifications
- Camera, Device and Sensor Event Alerts
- Storage Calculator
- User Access Rights
- Integration with Access Control
- Multi-OS Device Client for MAC Support
- Video Pop-up for Events
- Centralized Recording Plan
- Monitoring Plan
- Camera Grouping and Sequencing
- Event Log Search
- Audio Visual Alerts
- Video Display Alerts
- Intelligent E-map



## SATATYA SIGHT: MOBILE APPLICATION

SATATYA SIGHT is a mobile application for Matrix Video Surveillance which permits organizations to monitor and manage their premises remotely. To further enhance the remote viewing experience for an enterprise level user, SATATYA SIGHT provides more flexibility and enhanced security with the features it offers.

### Key Features

- 4x4 layout in live view
- Addition of up to 50 Devices
- Scene can be Viewed either in Mainstream or Sub-Stream
- Playback of Recorded Data
- Favorite Channel
- Digital Zoom
- PTZ Control
- Calling per Channel in Case of any Event
- Support for Android, iOS and Windows Mobile Phone/Tablets



# SATATYA CAMERAS



Matrix introduces a range of best in class 2MP and 3MP Cameras, designed to meet varied security requirements of enterprises. Powered by Sony's EXMOR technology sensor, these cameras provide crystal clear image quality with exceptional low light performance. It comes with True WDR to provide consistent image quality under varying light conditions. These weather proof cameras come in both, bullet and dome variants, and can be used for closer inspection of events.

## HIGH IMAGE QUALITY



### SONY's STARVIS series sensor with EXMOR technology

Sensor is back-illuminated giving color images at 0.08lux, thereby providing crystal clear night vision.



### TRUE WDR

Smartly rectifies the over and under-exposed areas in the scene, thus giving more informative and clear image.

## OPTIMIZED BANDWIDTH AND STORAGE



### H.265 Compression

Consumes 50% less bit-rate compare to H.264



### Adaptive Streaming

Records at lower frame-rate during non-activity period to save up to 50% on storage and bandwidth.



### Smart Streaming

Divides a single stream into multiple bit-rates based on its importance to optimize bandwidth and storage consumption.



### Region of Interest (ROI)

Matrix cameras provide ROI which allows streaming and recording of only critical areas from the entire image to optimize bandwidth and storage.



### Quad Stream Support

Matrix cameras have four stream support allowing different streams for viewing, storing and recording.



### SD Card Support

Local Storage of up to 128GB

## GREATER FIELD OF VIEW



### Greater Field of View

Get greater field of view as compared to any other camera (90° FOV at 3.6mm lens, 2MP resolution)

## NO PUBLIC IP REQUIRED



### Push Technology

Here, communication with the server is initiated from camera's end, which reduces load on the server and helps in uninterrupted network connection, in turn eliminating the need of public IP at each location.

## REAL-TIME SECURITY



### Early Detection

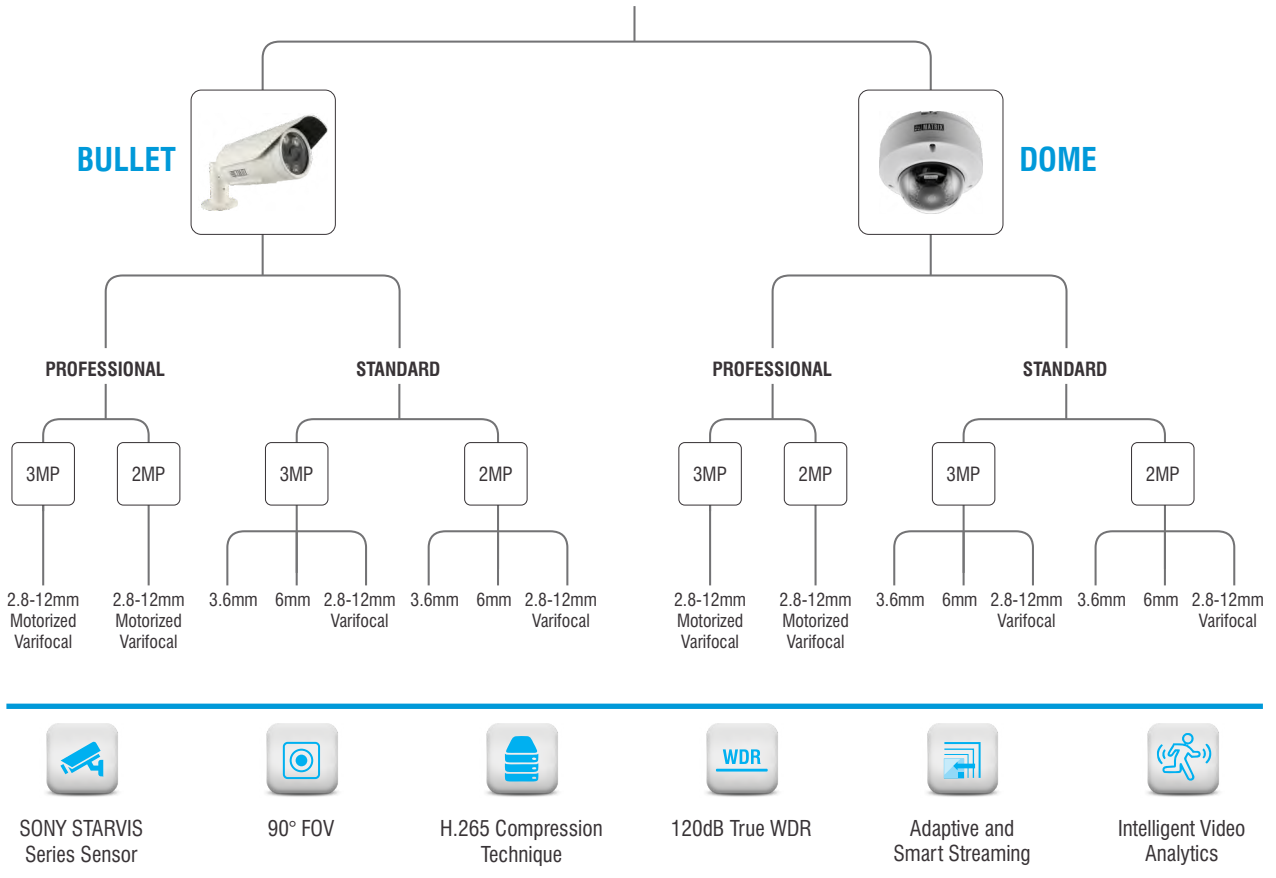
Matrix IP Cameras come with IVA's like Motion Detection, Intrusion Detection and Trip Wire for instant detection of suspicious events.



### Instant Notifications

On detection of threat, cameras send instant alerts like SMS, Email with Snapshot, Pre and Post Alarm based Recording, Upload Image/Clip, Ring Alarm and Schedule Snapshot for real-time security.

# MATRIX IP CAMERAS



## 3MP IP CAMERAS

| PREMIUM   |
|---|
| <b>SATATYA CIDR30MVL12CWP</b><br>3MP IR Dome Camera, Motorized Varifocal Lens with 2.8-12mm Lens, Professional Series   |
| <b>SATATYA CIBR30MVL12CWP</b><br>3MP IR Bullet Camera, Motorized Varifocal Lens with 2.8-12mm Lens, Professional Series |
| STANDARD  |
| <b>SATATYA CIDR30FL36CWS</b><br>3MP IR Dome Camera, Fixed Lens with 3.6mm Lens  |
| <b>SATATYA CIDR30FL60CWS</b><br>3MP IR Dome Camera, Fixed Lens with 6.0mm Lens  |
| <b>SATATYA CIDR30VL12CWS</b><br>3MP IR Dome Camera, Varifocal Lens with 2.8-12mm Lens                                   |
| <b>SATATYA CIBR30FL36CWS</b><br>3MP IR Bullet Camera, Fixed Lens with 3.6mm Lens  |
| <b>SATATYA CIBR30FL60CWS</b><br>3MP IR Bullet Camera, Fixed Lens with 6.0mm Lens  |
| <b>SATATYA CIBR30VL12CWS</b><br>3MP IR Bullet Camera, Varifocal lens with 2.8-12mm Lens                                 |

## 2MP IP CAMERAS

| PREMIUM   |
|---|
| <b>SATATYA CIDR20MVL12CWP</b><br>2MP IR Dome Camera, Motorized Varifocal Lens with 2.8-12mm Lens, Professional Series   |
| <b>SATATYA CIBR20MVL12CWP</b><br>2MP IR Bullet Camera, Motorized Varifocal Lens with 2.8-12mm Lens, Professional Series |
| STANDARD  |
| <b>SATATYA CIDR20FL36CWS</b><br>2MP IR Dome Camera, Fixed Lens with 3.6mm Lens  |
| <b>SATATYA CIDR20FL60CWS</b><br>2MP IR Dome Camera, Fixed Lens with 6.0mm Lens  |
| <b>SATATYA CIDR20VL12CWS</b><br>2MP IR Dome Camera, Varifocal Lens with 2.8-12mm Lens                                   |
| <b>SATATYA CIBR20FL36CWS</b><br>2MP IR Bullet Camera, Fixed Lens with 3.6mm Lens  |
| <b>SATATYA CIBR20FL60CWS</b><br>2MP IR Bullet Camera, Fixed Lens with 6.0mm Lens  |
| <b>SATATYA CIBR20VL12CWS</b><br>2MP IR Bullet Camera, Varifocal lens with 2.8-12mm Lens                                 |

## 2MP PTZ CAMERA: SATATYA CIDRP20VL130CW

Matrix SATATYA IP PTZ camera comes with a varifocal lens of 4.3-129mm which can cover an IR range of 120m. Furthermore, this camera also has 30x optical zooming capabilities which allow closer inspection.



### Key Features

- In-built Analytics: Intrusion Detection and Trip Wire
- 30x Optical Zoom, 4.3-129mm Varifocal Lens
- 6 Piece IR Array LEDs with IR Distance of 120m
- 1 Audio Input & 1 Audio Output
- 1 Alarm Input & 1 Alarm Output
- H.264/M-JPEG, Quad Streams
- 128GB SD Card
- IP66, TVS 4,000V Lightning Protection
- CE, RoHS and UL Certified

## IP CAMERAS: SPECIFICATIONS

| 2MP IP CAMERAS  |   |                          |                          |                          |                          |                          |                           |                           |                           |
|-----------------|---|--------------------------|--------------------------|--------------------------|--------------------------|--------------------------|---------------------------|---------------------------|---------------------------|
|                 | STANDARD  |                          |                          |                          |                          |                          | PREMIUM                   |                           | PTZ CAMERA                |
|                 | SATATYA<br>CIDR20FL36CWS  | SATATYA<br>CIBR20FL36CWS | SATATYA<br>CIDR20FL60CWS | SATATYA<br>CIBR20FL60CWS | SATATYA<br>CIDR20VL12CWS | SATATYA<br>CIBR20VL12CWS | SATATYA<br>CIDR20MVL12CWP | SATATYA<br>CIBR20MVL12CWP | SATATYA<br>CIDRP20VL130CW |
| Type of Camera  | IR Dome   | IR Bullet                | IR Dome                  | IR Bullet                | IR Dome                  | IR Bullet                | IR Dome                   | IR Bullet                 | PTZ                       |
| Image Sensor    | 1 / 2.8" SONY CMOS (EXMOR Technology STARVIS Series)            |                          |                          |                          |                          |                          |                           |                           | 1/2.8" DIS                |
| Lens Size       | 3.6mm   | 3.6mm                    | 6mm                      | 6mm                      | 2.8-12mm                 | 2.8-12mm                 | 2.8-12mm                  | 2.8-12mm                  | 4.3-129mm                 |
| IR Camera Range | 20-30m  |                          |                          |                          |                          |                          |                           |                           | 120m                      |
| Field of View   | 90  | 90                       | 56                       | 56                       | 98-33                    | 98-33                    | 98-33                     | 98-33                     |                           |
| Analytics       | Motion Detection, Trip Wire, Intrusion Detection, Camera Tamper |                          |                          |                          |                          |                          |                           |                           |                           |
| Certifications  | CE, FCC, IK10(Dome), IP66                                       |                          |                          |                          |                          |                          |                           |                           |                           |
| True WDR        | 120dB   |                          |                          |                          |                          |                          |                           |                           | -                         |
| SD Card         | 128GB   |                          |                          |                          |                          |                          |                           |                           |                           |

| 3MP IP CAMERAS  |   |                          |                          |                          |                          |                          |                           |                           |
|-----------------|---|--------------------------|--------------------------|--------------------------|--------------------------|--------------------------|---------------------------|---------------------------|
|                 | STANDARD  |                          |                          |                          |                          |                          | PREMIUM                   |                           |
|                 | SATATYA<br>CIDR30FL36CWS  | SATATYA<br>CIBR30FL36CWS | SATATYA<br>CIDR30FL60CWS | SATATYA<br>CIBR30FL60CWS | SATATYA<br>CIDR30VL12CWS | SATATYA<br>CIBR30VL12CWS | SATATYA<br>CIDR30MVL12CWP | SATATYA<br>CIBR30MVL12CWP |
| Type of Camera  | IR Dome   | IR Bullet                | IR Dome                  | IR Bullet                | IR Dome                  | IR Bullet                | IR Dome                   | IR Bullet                 |
| Image Sensor    | 1 / 2.8" SONY CMOS (EXMOR Technology STARVIS Series)            |                          |                          |                          |                          |                          |                           |                           |
| Lens Size       | 3.6mm   | 3.6mm                    | 6mm                      | 6mm                      | 2.8-12mm                 | 2.8-12mm                 | 2.8-12mm                  | 2.8-12mm                  |
| IR Camera Range | 20-30m  |                          |                          |                          |                          |                          |                           |                           |
| Field of View   | 82  | 82                       | 52                       | 52                       | 88-30                    | 88-30                    | 88-30                     | 88-30                     |
| Analytics       | Motion Detection, Trip Wire, Intrusion Detection, Camera Tamper |                          |                          |                          |                          |                          |                           |                           |
| Certifications  | CE, FCC, IK10(Dome), IP66                                       |                          |                          |                          |                          |                          |                           |                           |
| True WDR        | 120dB   |                          |                          |                          |                          |                          |                           |                           |
| SD Card         | 128GB   |                          |                          |                          |                          |                          |                           |                           |

# MATRIX FEATURES PERFORMANCE

## Higher Field of View



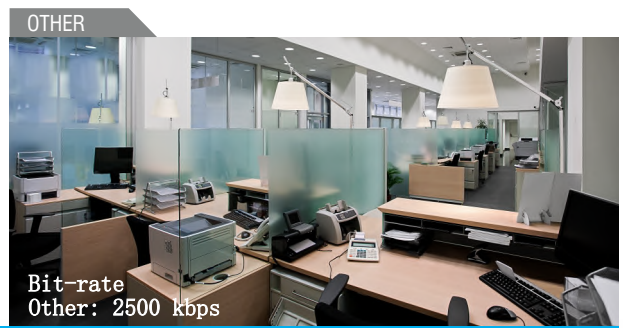
## Image Enhancement with True WDR



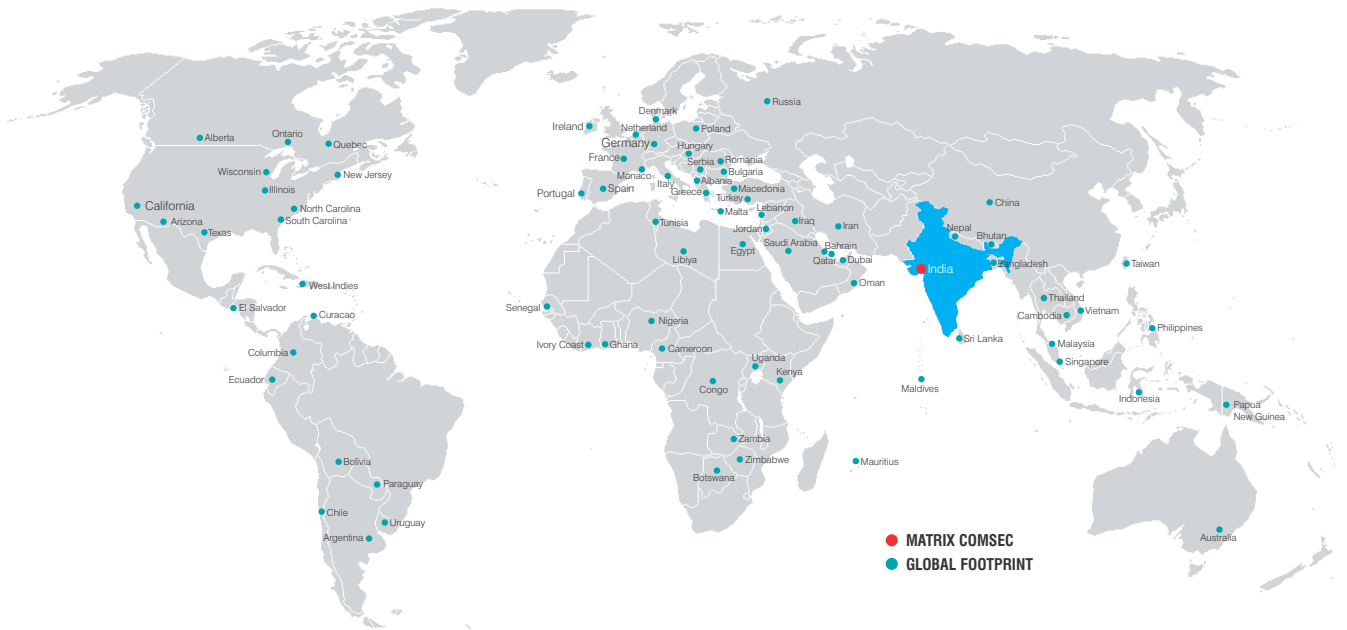
## Exceptional Low Light Performance



## Activity based Frame Rate Reduction



## MATRIX NETWORK



## MATRIX SATATYA CUSTOMERS

### CORPORATE

- Samsung C&T
- TCS Technology
- SGI Corp
- Tata Technologies
- Raymond Ind.
- Jaypeekint Lab
- COX & KINGS
- Honda Trading Corporation India Pvt. Ltd.
- Rustom Jee

### EDUCATION

- IIT
- RBK International School
- NIFT
- Chitkara Group of Institute
- GITAM University

### GOVERNMENT

- Indian Railways
- Indian Air Force
- NTPC
- Patna Airport
- Bhubaneswar Airport

### MANUFACTURING

- Godrej Ware House
- Tata Motors
- Tata Chemicals
- General Electronics
- Schneider Electric
- Colourtex
- Yamaha Motors
- Jasani
- Cooper Corporation

### MEDIA

- Network 18
- Times of India
- Matrimony.com

### OTHERS

- Lenskart
- Tanishq
- Taj Group
- Sanofi Pharma
- Deccan Chemicals
- Raheja Hospital
- Hotel Royal Park
- NESCO
- BTI Payments
- Nashik Railways
- Dnata Group

## ABOUT MATRIX

Established in 1991, Matrix is a leader in security and telecom solutions for modern businesses and enterprises. Matrix, an innovative, technology driven and customer focused organization, is committed to keep pace with the revolutions in security and telecom industries. With more than 40% of its human resources dedicated to the development of new products, Matrix has launched cutting-edge products such as Unified Communications, IP-PBX, Universal Gateways, Convergence, VOIP Gateways, GSM Gateways, IP Video Surveillance, Access Control and Time-Attendance. These solutions are feature-rich, reliable and conform to the international standards. Having global footprints in Europe, North America, South America, Africa and Asia through an extensive network of more than 1000 system integrators, Matrix ensures that the products serve the needs of its customers faster and longer. Matrix has gained trust and admiration of customers representing the entire spectrum of industries. Matrix has won many national and international awards for its innovative products.

For further information, please contact:



### MATRIX COMSEC

#### Head Office

394-GIDC, Makarpura, Vadodara-390 010, India.  
 Ph: +91 265 2630555  
 E-mail: Inquiry@MatrixComSec.com

#### Factory

19-GIDC, Waghodia, Dist. Vadodara-391 760, India.  
 Ph: +91 2668 263172/73

[www.MatrixVideoSurveillance.com](http://www.MatrixVideoSurveillance.com)